

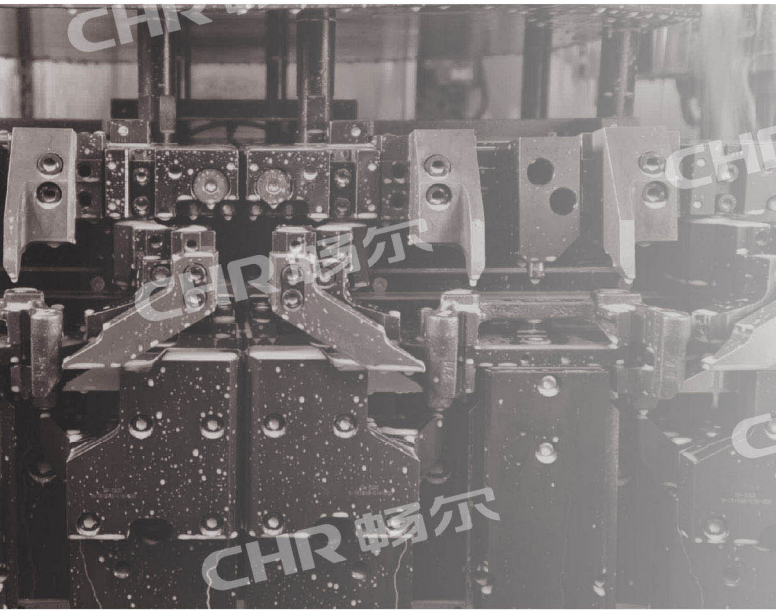
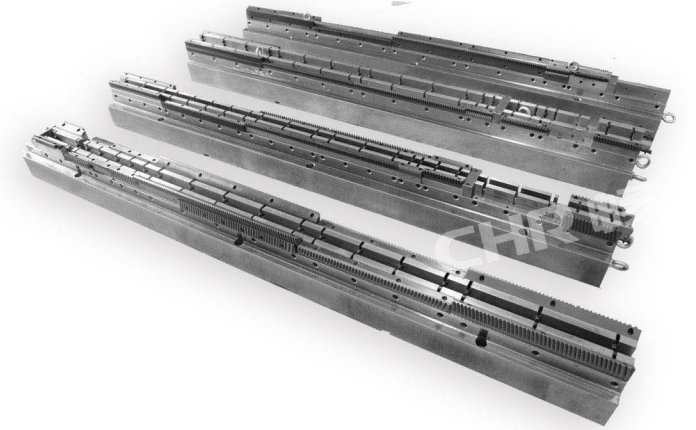
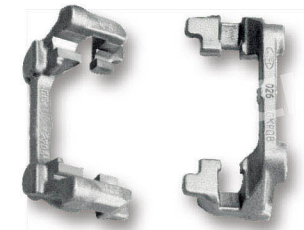
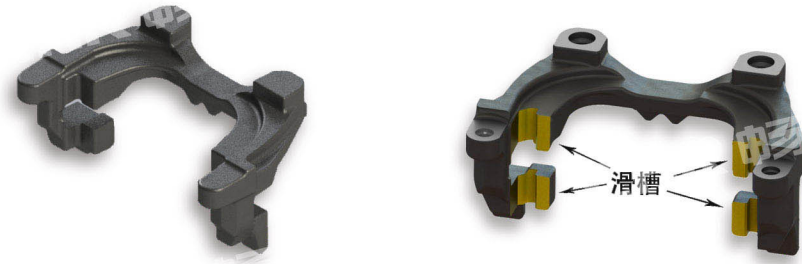
Automotive brake calipers broaching

CHR 畅尔 汽车刹车卡钳加工



满足各类型汽车刹车支架的滑槽加工

Meet the slide groove processing of various types of automotive brake brackets



LG72SS 系列
LG72SS Series

项目 ITEM	单位 UNIT	LG7220SS-2300
额定拉削力 Rated broaching force	kN	200
最大行程 Max.stroke	mm	2,300
装刀长度 Tool mounting length	mm	1,700
拉削速度 Broaching speed	m/min	1 ~ 30
返程速度 Return speed	m/min	35
机床总功率 Total power	kW	102
机床外形 Machine tool shape	m	8.8x5.0x7.6
机床净重 Net weight	t	25

LG71HA 系列
LG71HA Series

项目 ITEM	单位 UNIT	LG7120HA-2500
额定拉削力 Rated broaching force	kN	200
最大行程 Max.stroke	mm	2,500
装刀长度 Tool mounting length	mm	2,300
拉削速度 Broaching speed	m/min	1 ~ 17
返程速度 Return speed	m/min	30
机床总功率 Total power	kW	75
机床外形 Machine tool shape	m	4.6x7.0x8.2
机床净重 Net weight	t	14

LG71TG 系列
LG71TG Series

项目 ITEM	单位 UNIT	LG7120TG-2600
额定拉削力 Rated broaching force	kN	200
最大行程 Max.stroke	mm	2,600
装刀长度 Tool mounting length	mm	2,050
拉削速度 Broaching speed	m/min	1 ~ 17
返程速度 Return speed	m/min	30
机床总功率 Total power	kW	65
机床外形 Machine tool shape	m	3.6x6.0x8.0
机床净重 Net weight	t	16

LG72RS 系列
LG72RS Series

项目 ITEM	单位 UNIT	LG7220RS-2800
额定拉削力 Rated broaching force	kN	200
最大行程 Max.stroke	mm	2,800
装刀长度 Tool mounting length	mm	2,300
拉削速度 Broaching speed	m/min	1 ~ 17
返程速度 Return speed	m/min	20
机床总功率 Total power	kW	68
机床外形 Machine tool shape	m	4.3x5.3x7.7
机床净重 Net weight	t	26



闭门器活塞卧式侧拉床

Door closer piston horizontal side broaching machine

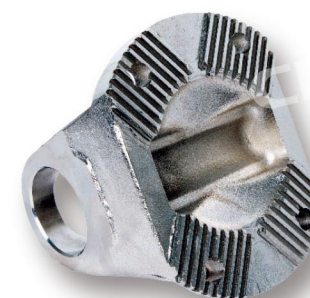


- 地面安装，结构紧凑，伺服驱动 *Ground installation, compact structure, servo drive*
- 拉刀固定，工件移动的拉削方式 *Broaching way: broaches fixed, moving workpiece*
- 固定工作台，双工位拉削，效率高 *Fixed worktable, broaching with double stations to improve efficiency*



端面齿拉床

End face tooth broaching machine



- 进退回转工作台
· Forward and backward rotary table
- 液压夹具自动转位
· Automatic indexing of hydraulic fixture



LG7120DC-2200



Automation Application Examples

CHR 畅尔 自动化应用案例

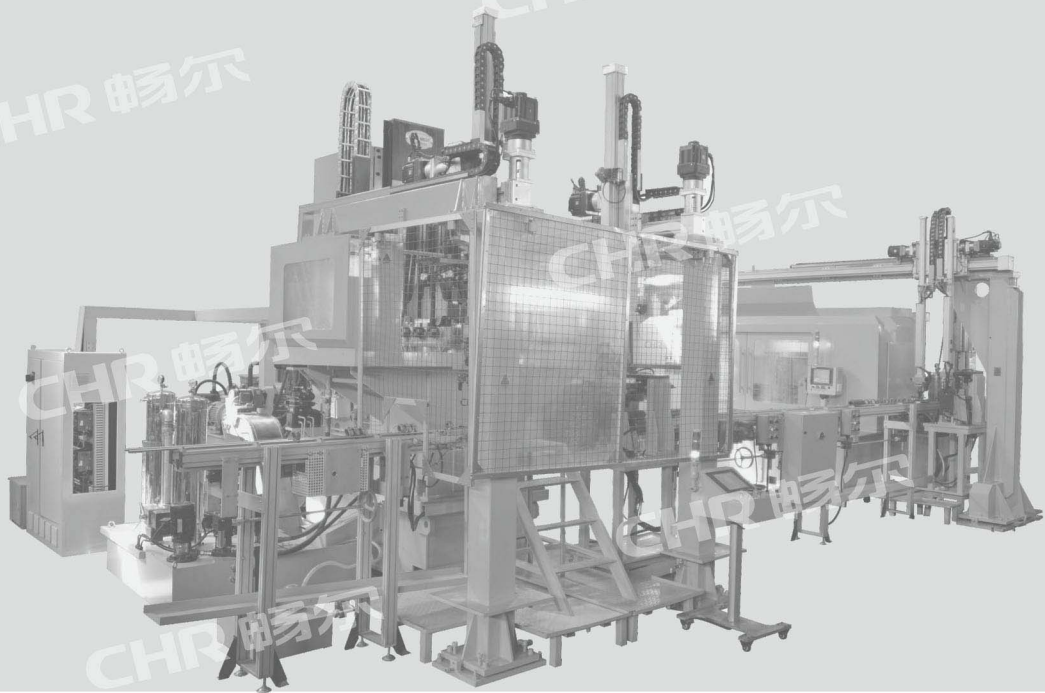
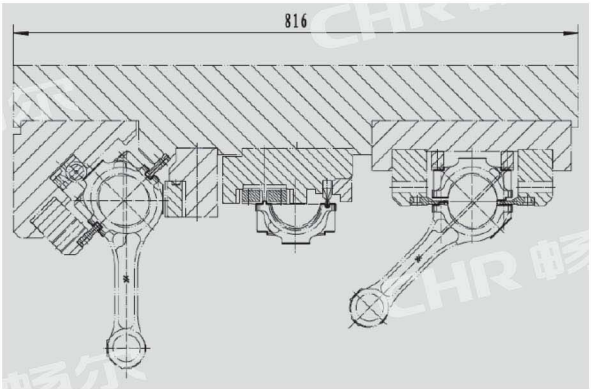
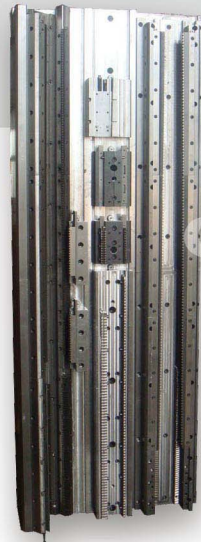


连杆自动化生产线

Connecting rod automated production line



- 连杆加工整体解决方案
· Total solution for connecting rod processing
- 实现钻孔、倒角、镗孔、平面拉削等加工
· Realisation of drilling, chamfering, boring, plane broaching, etc
- 加工节拍为 10 秒 / 件
· Processing cycle is 10 seconds/pcs





转向齿条专用自动化拉床

Steering rack special automatic broaching machine



- 适用于齿条拉削加工
- Suitable for broaching rack

- 具备自动上料、工件精确定位、自动除油、自动下料、自动监测等功能
- It has the functions of automatic feeding, accurate workpiece positioning, automatic degreasing, automatic unloading and automatic monitoring, etc

- 加工节拍为 24 秒 / 件
- The processing cycle is 24 seconds/piece

